

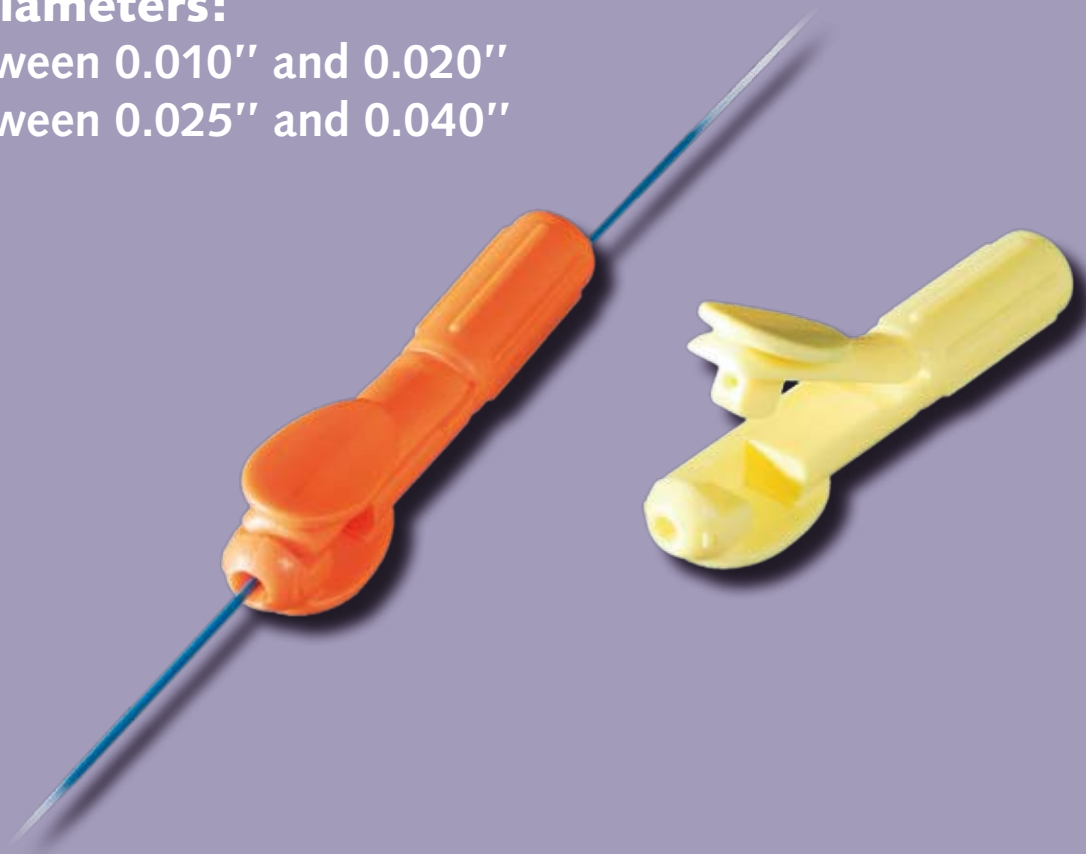
Interventional  
imaging

## ▶ ALLIGATORK

The ergonomic torque device  
operable with one hand

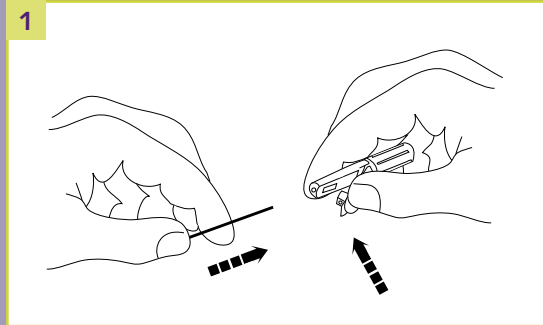
○ Press and release handling system

○ 2 diameters:  
between 0.010" and 0.020"  
between 0.025" and 0.040"

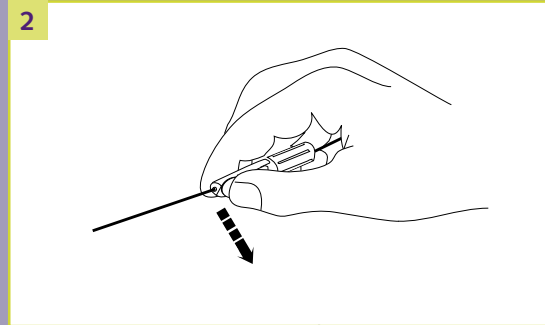




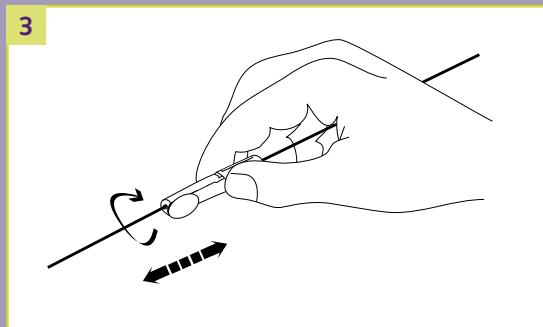
### INSTRUCTIONS FOR USE



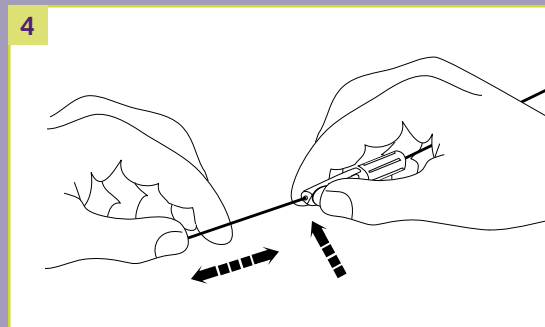
1 Pressing lever firmly and inserting guidewire



2 Positioning torque device and releasing lever



3 Positioning your guidewire



4 Pressing lever firmly to move or remove torque device

References	Description	Packaging
0203NA	Yellow for guidewires with diameter between 0.010" and 0.020" <i>Single packed and sterile (EO)</i>	48-unit box
0203NB	Yellow for guidewires with diameter between 0.010" and 0.020" <i>Bulk non sterile</i>	300-unit box
0203NC	Orange for guidewires with diameter between 0.025" and 0.040" <i>Single packed and sterile (EO)</i>	48-unit box
0203ND	Orange for guidewires with diameter between 0.025" and 0.040" <i>Bulk non sterile</i>	300-unit box