

 **medCOMP**[®]

Effective Solutions For Vascular Access.

**NOW AVAILABLE
5FR DOUBLE LUMEN**

PRO-PICC^{CT}

POWER WITHIN REACH.

**TOTAL
ACCESS**

POWER WITHIN REACH.

PRO-PICC™ CT

Grab hold of the new purple **PRO-PICC™ CT** from Medcomp®.

Innovative technology has allowed for the infusion of both CT power injection capability and PICC therapy. The *extended* length of the **PRO-PICC™ CT** catheter offers unparalleled versatility for patient and insertion site requirements. The highly advanced **PRO-PICC™ CT** is the next generation of Medcomp® PICCs within your reach!

PRO-PICC^{CT}

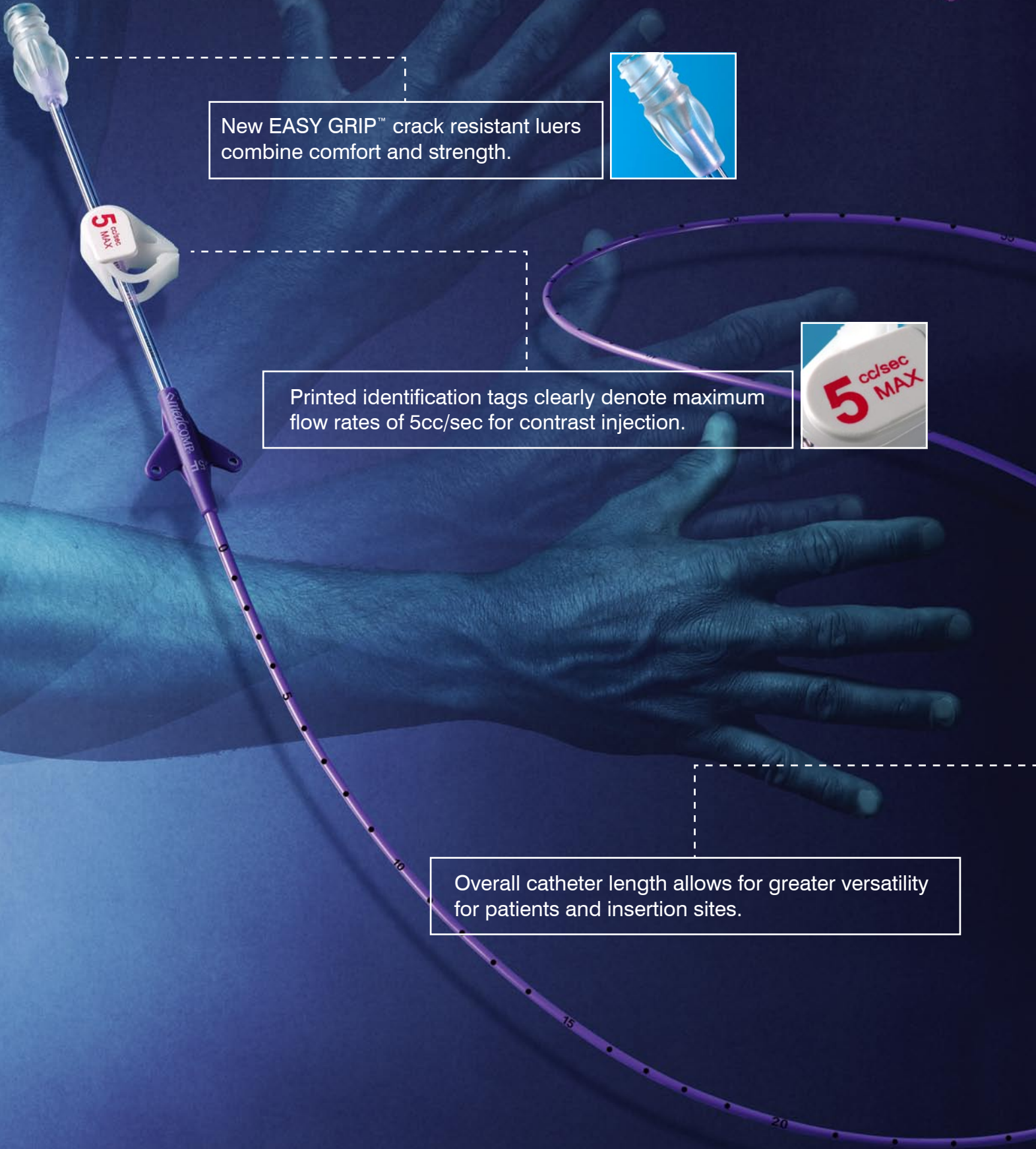
New EASY GRIP™ crack resistant luers combine comfort and strength.



Printed identification tags clearly denote maximum flow rates of 5cc/sec for contrast injection.



Overall catheter length allows for greater versatility for patients and insertion sites.





PRO-PICC™CT - Basic IR Tray with 65cm Nitinol Wire

- *4FR x 55cm Single Lumen PICC Catheter
- 5FR x 60cm Single Lumen PICC Catheter
- 5FR X 55CM Double Lumen PICC Catheter
- 6FR x 60cm Double Lumen PICC Catheter

TRAYS 5/BOX

- CTPICC4S
- CTPICC5S
- CTPICC5D
- CTPICC6D

PRO-PICC™CT - IR Long Wire - Basic Tray with 130cm Nitinol Wire

- *4FR x 55cm Single Lumen PICC Catheter, with 130cm Wire
- 5FR x 60cm Single Lumen PICC Catheter, with 130cm Wire
- 5FR x 55cm Double Lumen PICC Catheter, with 130cm Wire
- 6FR x 60cm Double Lumen PICC Catheter, with 130cm Wire

TRAYS 5/BOX

- CTPICC4SL
- CTPICC5SL
- CTPICC5DL
- CTPICC6DL

PRO-PICC™CT - Basic Nursing - Basic Tray with NURSING SAFETY COMPONENTS

- *4FR x 55cm Single Lumen PICC Catheter, with Safety Components
- 5FR x 60cm Single Lumen PICC Catheter, with Safety Components
- 5FR x 55cm Double Lumen PICC Catheter, with Safety Components
- 6FR x 60cm Double Lumen PICC Catheter, with Safety Components

TRAYS 5/BOX

- CTPICC4SN
- CTPICC5SN
- CTPICC5DN
- CTPICC6DN

BASIC - 65cm Guidewire

- (1) Catheter with Sideport and Stiffening Stylet
- (1) 21Ga x 7cm Introducer Needle with Echo Tip
- (1) .018" x 65cm Nitinol Marked Guidewire with Platinum Tip
- (1) 10cm PTFE Tearaway Introducer Sheath
- (1) #11 Mini Scalpel
- (1) 10cc Syringe
- (1|2) Positive Pressure Cap(s)
- (1) Adhesive Securement Device
- (1) Measuring Tape

LONG - 130cm Guidewire

- (1) Catheter
- (1) 21Ga x 7cm Introducer Needle with Echo Tip
- (1) .018" x 130cm Nitinol Marked Guidewire with Platinum Tip
- (1) 10cm PTFE Tearaway Introducer Sheath
- (1) #11 Mini Scalpel
- (1) 10cc Syringe
- (1|2) Positive Pressure Cap(s)
- (1) Adhesive Securement Device
- (1) Measuring Tape

NURSING - Safety Tray

- (1) Catheter with Sideport and Stiffening Stylet
- (1) 21Ga x 7cm Safety Introducer Needle with Echo Tip
- (1) .018" x 40cm Nitinol Guidewire with Platinum Tip
- (1) 5cm PTFE Tearaway Introducer Sheath
- (1) #11 Safety Scalpel
- (1) 10cc Syringe
- (1|2) Positive Pressure Cap(s)
- (1) Adhesive Securement Device
- (1) Measuring Tape
- (1) Latex-Free Tourniquet

***4FR Available Summer of 2006**