

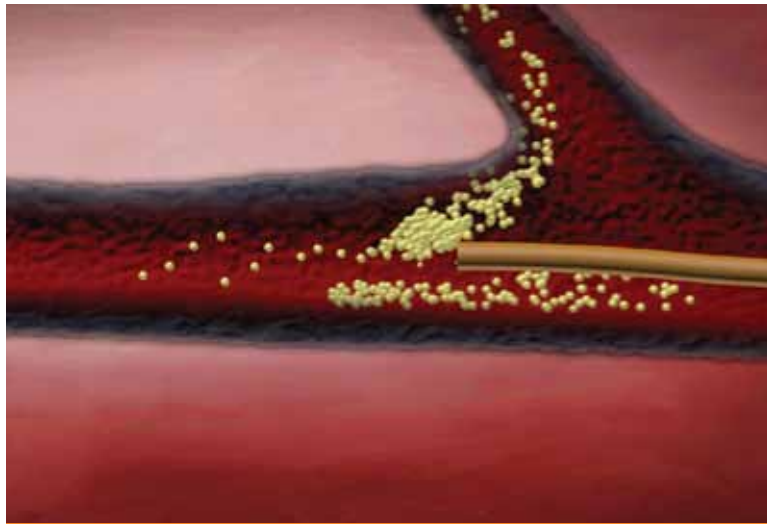


**surefire**  
MEDICAL INC.

**Surefire<sup>®</sup> Infusion System**

*Deliver with Confidence*





Standard Catheter

The Surefire® Infusion System is designed to give you confidence and control with your infusion procedures.

**Infusion Control**

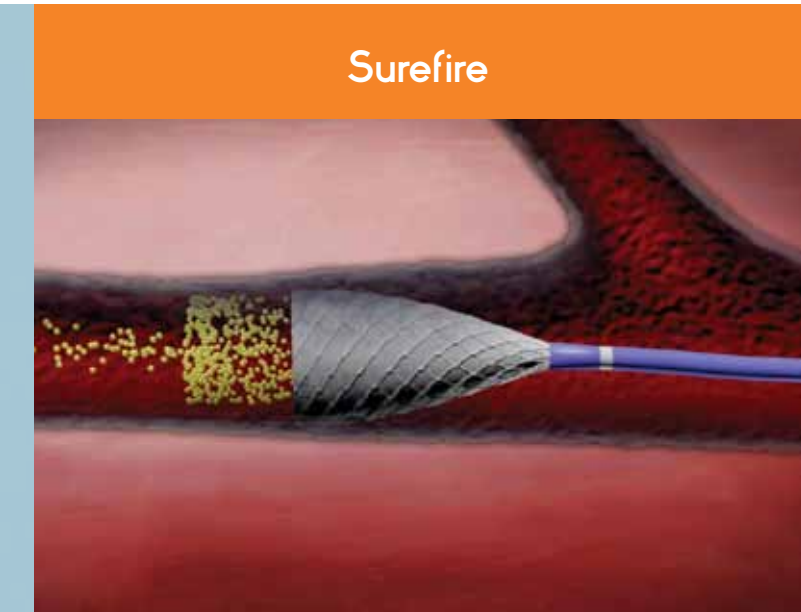
The unique Surefire expandable tip is designed to collapse in forward flow, allowing native forward blood flow to deliver diagnostic and therapeutic agents.

**Designed to Minimize Reflux**

The unique Surefire expandable tip is designed to dynamically expand in reverse flow, which is essential in reducing reflux of diagnostic and therapeutic agents to non-target vessels.

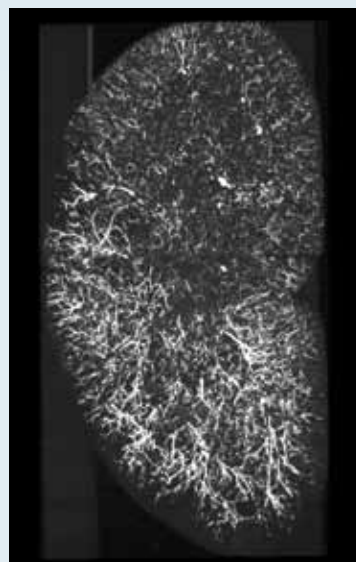
**Improved Workflow**

The Surefire Infusion System is designed to streamline the time and cost of infusion procedures.

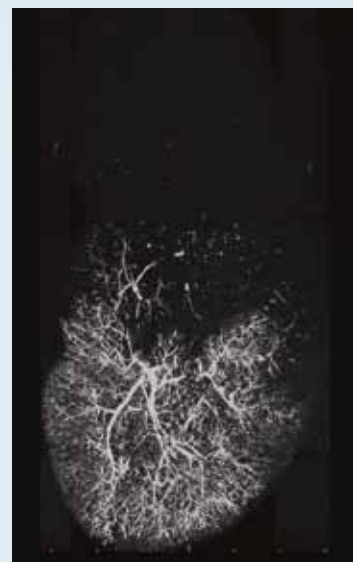


Surefire

**Surefire Infusion System: Deliver with Confidence**



Standard 4F Infusion Catheter



Surefire Infusion System

**Animal Study Results**

Infusion Efficiency is the percentage of infusate that is delivered to a target vessel. With standard catheters in slow flow conditions, infusion efficiency can drop due to the backflow of infusate into non-target vessels.

In animal studies, the Surefire Infusion System was compared to a Standard 4F Infusion Catheter in infusion efficiency. The Surefire Infusion System achieved infusion efficiency of 99.1% compared to 70.8% for the Standard 4F Infusion Catheter (N=3 p=.005).

REFERENCE: K. Hong, J. Chomas, D. Kraitchman, B. Nagreiter, A. Arepally. Quantification and reduction of reflux during embolotherapy using micro CT and tantalum beads with ex-vivo analysis. Presented at the World Congress of Interventional Oncology, June 2011. Data on file at Surefire Medical, Inc.

**Case Study**

**Clinical Diagnosis:**

Simultaneous Colorectal Cancer and Squamous Cell Resection

**Anatomy:**

Replaced Right Hepatic Artery arising off the Superior Mesenteric Artery. Prominent pancreaticoduodenal arteries arising off the proximal replaced right hepatic artery (arrows)

**Treatment Plan:**

The Surefire Infusion System was placed in the Replaced Right Hepatic Artery distal to the pancreaticoduodenal branches, followed by infusion of microspheres into the Right Hepatic Artery



Replaced Right Hepatic Artery

REFERENCE: Data on file at Surefire Medical, Inc. Courtesy of Professor Lourens Bester, St. Vincent's Public and Private Hospitals, Sydney, Australia.

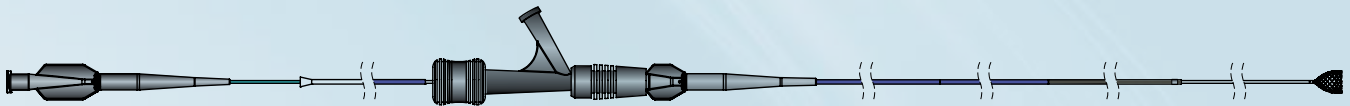
# Ordering Information

## Surefire Infusion System

Catalog Number	Description
<b>SIS-4865</b>	<b>Surefire Infusion System</b>

**Intended Use:** The Surefire Infusion Catheter System is intended for use in angiographic procedures. It delivers radiopaque media and therapeutic agents to selected sites in the peripheral vascular system.

**Contraindications:** The Surefire Infusion Catheter System is not intended for use in the coronary or neurovasculature. Prior to use, please see the complete 'Instructions for Use' for the product's Indications, Contradictions, Warnings, Precautions, Adverse Events, and Operator's Instructions at [www.surefiremedical.com](http://www.surefiremedical.com) or in the insert provided with the product.



Component	Specification
Guide Sheath	OD: 4.8F Length: 65 cm
Guide Sheath Guidewire Compatibility	0.035"
Infusion Microcatheter	OD: 3F ID: 0.027" Length: 110 cm
Infusion Microcatheter Guidewire Compatibility	0.018"

To order product or for more information, contact Customer Service  
at 888.321.5212 or fax to 303.426.1223

© 2011 Surefire Medical, Inc. All rights reserved.

